



Local Development Framework

Adopted Proposals Map

Published by South Cambridgeshire District Council

© To be published January 2010

Gareth Jones, BSc (Hons), MRTPI – Corporate Manager
(Planning & Sustainable Communities)

CONTENTS

		Page
	Chapter 1 Introduction	1
	Chapter 2 Schedule of Adopted Plans and Saved Policies	2
		Key
	District Wide Proposals Maps	
	North West	
	North East	
	South West	
	South East	
	Inset Proposals Maps	
Inset Map Number	Village	
A	Northstowe	
B	Cambridge East	
C	Trumpington West	
D	South of Addenbrooke's	
E	Cambridge Northern Fringe	
F	North West Cambridge Area Action Plan	
G	North West Cambridge Huntingdon Road to Histon Road	
1	Abington Pigotts	
2	Arrington	
3	Babraham	
4	Balsham	
5	Bar Hill	
6	Barrington	
7	Bartlow	
8	Barton	
9	Bassingbourn	
10	Bassingbourn Barracks	
11	Bourn	
12	Boxworth	
13	Highfields Caldecote	
14	Cambourne	
15	Cambridge Airport Safety Zone	
16	Carlton	
17	Castle Camps	
18	Caxton	
19	Cherry Hinton	
20	Comberton	
21	Conington	
22	Coton	

Inset Map Number	Village
23	Cottenham
24	Croxton
25	Croydon
26	Dry Drayton
27	Duxford
28	Elsworth
29	Eltisley
30	Fen Ditton
31	Fen Drayton
32	Fen Drayton Former LSA Estates
33	Fowlmere
34	Foxton
35	Fulbourn
36	Gamlingay
37	Girton
38	Grantchester
39	Graveley
40	Great & Little Abington
41	Great Abington, Granta Park
42	Great Chishill
43	Great & Little Eversden
44	Great Shelford & Stapleford
45	Great Wilbraham
46	Guilden Morden
47	Hardwick
48	Harlton
49	Harston
50	Haslingfield
51	Hatley
52	Hauxton
53	Heathfield
54	Heydon
55	Hildersham
56	Hinxton
57	Histon & Impington
58	Horningsea
59	Horseheath
60	Ickleton
61	Kingston
62	Knapwell
63	Kneesworth
64	Landbeach
65	Landbeach, Cambridge Research Park & adjoining site
66	Linton
67	Litlington
68	Little Gransden
69	Little Shelford

Inset Map Number	Village
70	Little Wilbraham
71	Lolworth
72	Longstanton
73	Longstowe
74	Madingley
75	Melbourn
76	Meldreth
77	Milton
78	Newton
79	Oakington
80	Orwell
81	Over
82	Pampisford
83	Papworth Everard
84	Papworth St Agnes
85	Rampton
86	Sawston
87	Sawston, Spicers
88	Shepreth
89	Shingay-cum-Wendy
90	Shudy Camps
91	Six Mile Bottom
92	Steeple Morden
93	Stow-cum-Quy
94	Streetly End
95	Swavesey
96	Swavesey, Buckingham Business Park
97	Tadlow
98	Teversham
99	Thriplow
100	Toft
101	Waterbeach
102	Weston Colville
103	West Wickham
104	West Wrating
105	Whaddon
106	Whittlesford
107	Whittlesford Bridge
108	Willingham
109	Wimpole

Appendix 1A Longstanton Conservation Area

Appendix 1B Teversham Conservation Area

1. INTRODUCTION

- 1.1 The Adopted Proposals Map shows the boundaries of policies contained in the Council's adopted plans that have spatial implications, i.e. allocations of land for development, and policy areas to which a specific policy applies. Whilst the Council is transferring to the new system of plan making, this includes policies in the adopted Local Development Framework (LDF) documents together with the policy that has been 'saved' from the adopted Local Plan 2004.
- 1.2 The Adopted Proposals Map is updated each time a new Development Plan Document that has spatial implications is adopted.
- 1.3 The Adopted Proposals Map comprises a district-wide Proposals Map together with Inset Maps for each of the major development sites and the villages.
- 1.4 The key indicates which Development Plan Document (DPD) should be viewed to see the adopted policy or policies that apply to the allocation or policy area.
- 1.5 There are two cases where the area covered by Area Action Plans means that the Inset Maps for nearby villages are not entirely clear in respect of the area included within a Conservation Area. Under the plan making system it is not possible to show an allocation or policy area on the Proposals Map more than once. Therefore the full Longstanton and Teversham Conservation Area boundaries are replicated in Appendices 1A and 1B and a note has been added to the Inset Maps for Longstanton and Teversham.
- 1.6 An interactive version of the Adopted Proposals Map is available to view on the Council's website: www.scambbs.gov.uk/ldf. The interactive Proposals Map provides links to view the relevant adopted policy.

2. SCHEDULE OF ADOPTED PLANS AND SAVED POLICIES (POSITION AT JANUARY 2010)

Core Strategy Development Plan Document (DPD) (adopted January 2007)
Development Control Policies DPD (adopted July 2007)
Northstowe Area Action Plan (adopted July 2007)
Cambridge Southern Fringe Area Action Plan (adopted February 2008)
Cambridge East Area Action Plan (adopted February 2008)
North West Cambridge Area Action Plan (adopted October 2009)
Site Specific Policies DPD (adopted January 2010)
Local Plan (adopted 2004) (saved policy)

Development Plan Documents (DPDs)

2.1 The following district-wide Development Plan Documents (DPDs) have been adopted by the Council and form part of its Local Development Framework (LDF):

- Core Strategy DPD (adopted January 2007)
- Development Control Policies DPD (adopted July 2007)
- Site Specific Policies DPD (adopted January 2010)

Area Action Plans

2.2 There are also a number of Area Action Plans (AAP) for major developments which have DPD status and which include policies specific to the development of these parts of the district. These adopted policies supersede any district-wide policies applying within the development area.

2.3 The adopted AAPs are as follows:

- Northstowe AAP (adopted July 2007)
- Cambridge Southern Fringe AAP (adopted February 2008)
- Cambridge East AAP (adopted February 2008)
- North West Cambridge AAP (adopted October 2009)

Local Plan 2004

2.4 The adopted Local Plan 2004 has now been almost entirely replaced by policies in the adopted DPDs, or are no longer in force because:




- They have been implemented as development proposals, or
- National planning policy provides sufficient policy guidance; or
- They cease to have effect as a result of a change of policy approach.

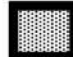

2.5 Since September 2007, only the Local Plan 2004 policies that have been 'saved' remain in force. A list of which policies were 'saved' was provided by the Government. However, as each of the DPDs that form part of the LDF has been adopted, the remaining policies within Local Plan 2004 have been superseded.

2.6 At January 2010, only one Local Plan 2004 policy remains in force: Policy CNF6 Expansion of Existing Sites. This applies to an area in Chesterton Fen Road, Cambridge and deals with applications for Gypsy sites.














2.7 Saved Local Plan Policy CNF6 will be superseded by the Gypsy and Traveller Development Plan Document when it is adopted. The DPD is currently at the Issues and Options stage.

KEY

-  South Cambridgeshire District Boundary
-  Inset Map Boundary
(applicable to district wide maps 1-4)
-  Area Action Plan Boundary
(applicable to insets A, C, D, E, F)

-  Area Outside SCDC Boundary
-  Area Covered By Another Map

Adopted LDF Policies

-  Cambridge East Phase 1 (Policy CE/3)
-  Cambridgeshire Guided Busway (Policy SP/16)
-  Conservation Area (Policy CH/5)
-  Country Park
(Policies CE/21(1) and CSF/5(1a))
-  County Wildlife Site (Policy NE/7)
-  Development Frameworks (Policy DP/7)
-  Employment Allocation
(Policies SP/12 & SP/13)
-  Employment Commitment
(Policies SP/12 & SP/13)
-  Environment Agency Flood Zone 2
Medium Risk (Policy NE/11) (December 2009)
-  Environment Agency Flood Zone 3
High Risk (Policy NE/11) (December 2009)
-  Established Employment Area (Policy ET/3)
-  Green Belt
(Policies ST/1, GB/1, GB/2 & GB/3)
-  Historic Parks & Gardens (Policy CH/1)
-  Housing Allocation
(Policies SP/1, SP/2, SP/6 & SP/7))
-  Important Countryside Frontage (Policy CH/7)
-  Improved Landscaping
(Policies CSF/5 (1b-e) & CSF/5 (2f-m))
-  Landscape Buffer (Policy NS/13(1))
-  Local Nature Reserve (Policy NE/7)
-  Longer Term Strategic Reserve for Residential
Development and Related Local Services
(Policy NS/3(g))
-  Lordsbridge Restricted Area (Policy SF/8)
-  Lordsbridge Consultation Area 1 (Policy SF/8)
-  Lordsbridge Consultation Area 2 (Policy SF/8)
-  Major Development Site
(Policies CE/3, CSF/3, NS/3 & NW/4)
-  Major Developed Site in the Green Belt
(Policy GB/4)
-  Protected Village Amenity Area (Policy CH/6)
-  Scheduled Ancient Monument (Policy CH/2)
-  Site of Special Scientific Interest (Policy NE/7)
-  Special Policy Area (Policies CE/32, CH/10, CH/11,
NS/11(8), SP/5, SP/8, SP/9, SP/10, SP/11, SP/14,
SP/17 & SP/19)

Saved Local Plan 2004 Policies



-  Special Policy Area (Policy CNF6)

Notes

For further information on flood zones, please visit the Environment Agency's website: <http://www.environment-agency.gov.uk>

The Cambridgeshire Aggregates (Minerals) Local Plan 1991 (Cambridgeshire County Council)

Policy CALP 3 - Preferred Areas for Future Workings



-  Area of Search within which potential New Sites may be identified (Policy CALP 3C)
-  Site Specific Extensions to Existing Sites where Planning Permission had not been granted as at 01.01.90 (Policy CALP 3B)

Cambridgeshire and Peterborough Waste Local Plan 2003 (Cambridgeshire County Council)

-  Major Waste Management Facility (Policy WLP18)

NOTE: Also includes:

- i. All new major developments including new settlements
- n. Cambridge Area (Area of search) (NOTE: Covers whole of South Cambridgeshire excluding the Green Belt)

-  Safeguarding Waste Management Site (Policy WLP19)
-  Putrescible, Hazardous and Inert Landfill (Policy WLP28)

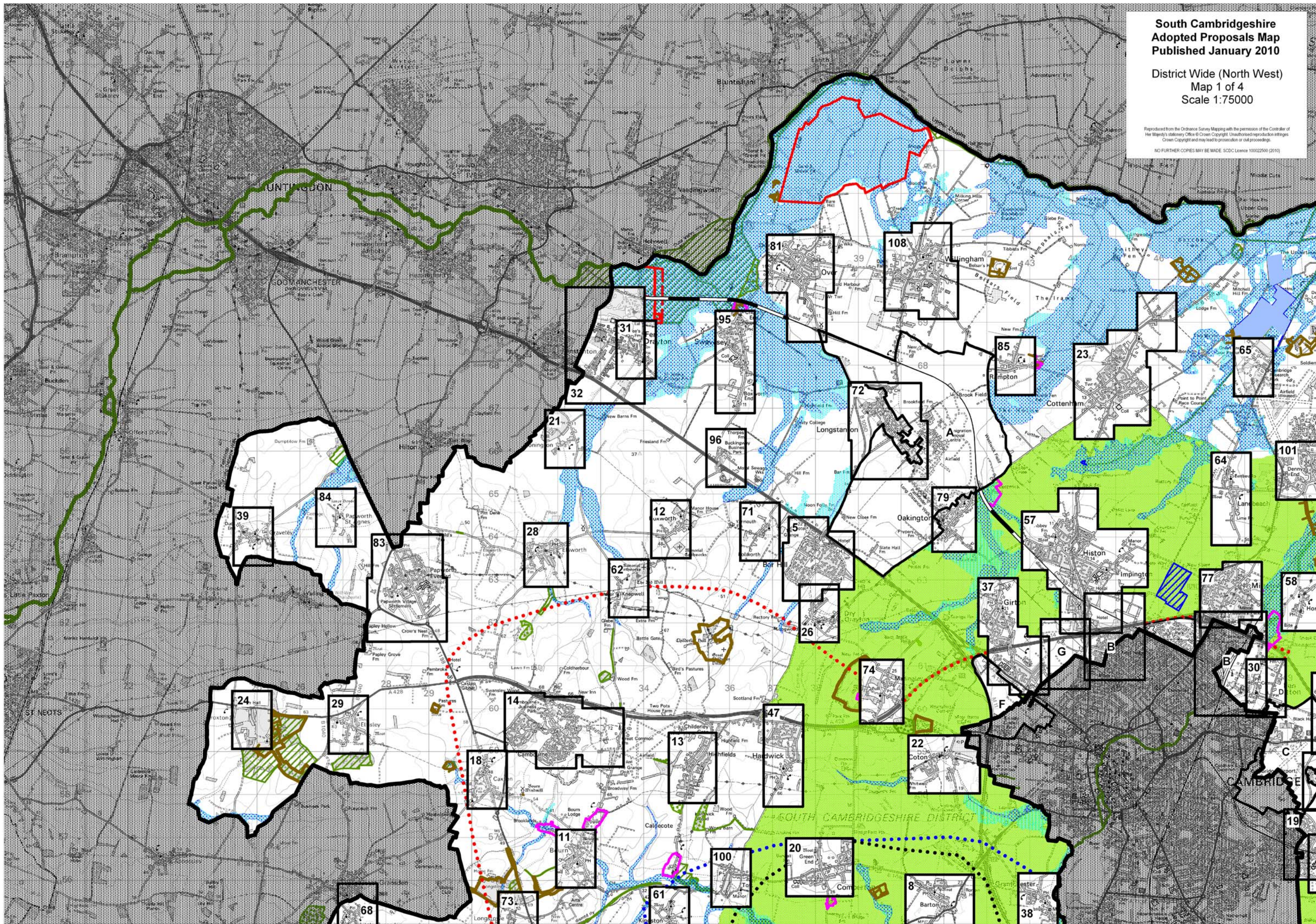
Note on Adopted LDF Documents & Adopted Policies

Core Strategy DPD contains policies prefixed "ST".
Northstowe AAP contains policies prefixed "NS".
Cambridge East AAP contains policies prefixed "CE/2".
Cambridge Southern Fringe AAP contains policies prefixed "CSF".
Site Specific Policies DPD contains policies prefixed "SP".
North West Cambridge AAP contains policies prefixed "NW".
Development Control Policies DPD contains policies prefixed "DP", "GB", "HG", "ET", "SF", "NE", "CH", "TR" & "M".

**South Cambridgeshire
Adopted Proposals Map
Published January 2010**

District Wide (North West)
Map 1 of 4
Scale 1:75000

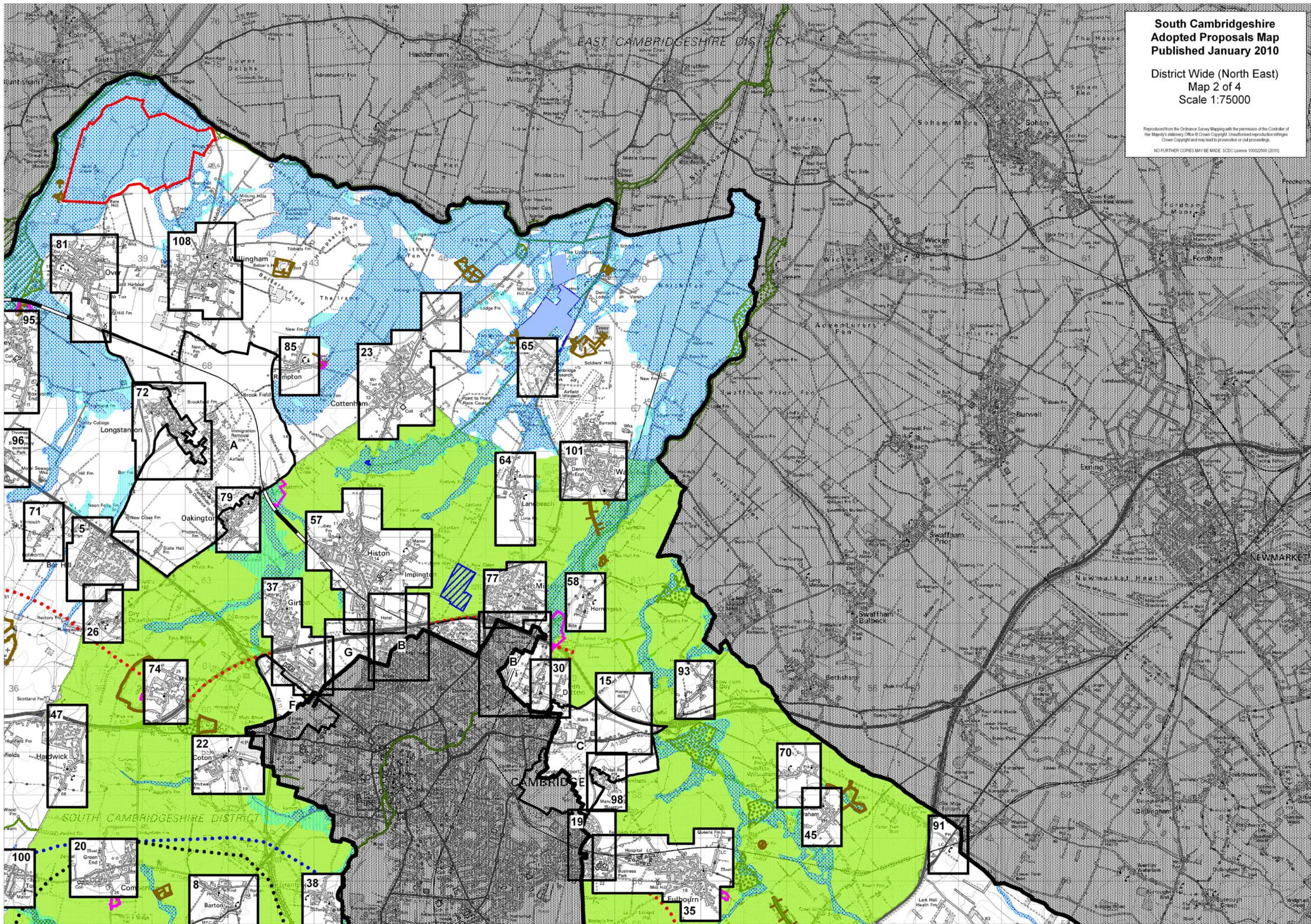
Reproduced from the Ordnance Survey Mapping with the permission of the Controller of Her Majesty's Stationery Office © Crown Copyright. Unauthorised reproduction infringes Crown Copyright and may lead to prosecution or civil proceedings.
NO FURTHER COPIES MAY BE MADE. SDCDC Licence 100022500 (2010)

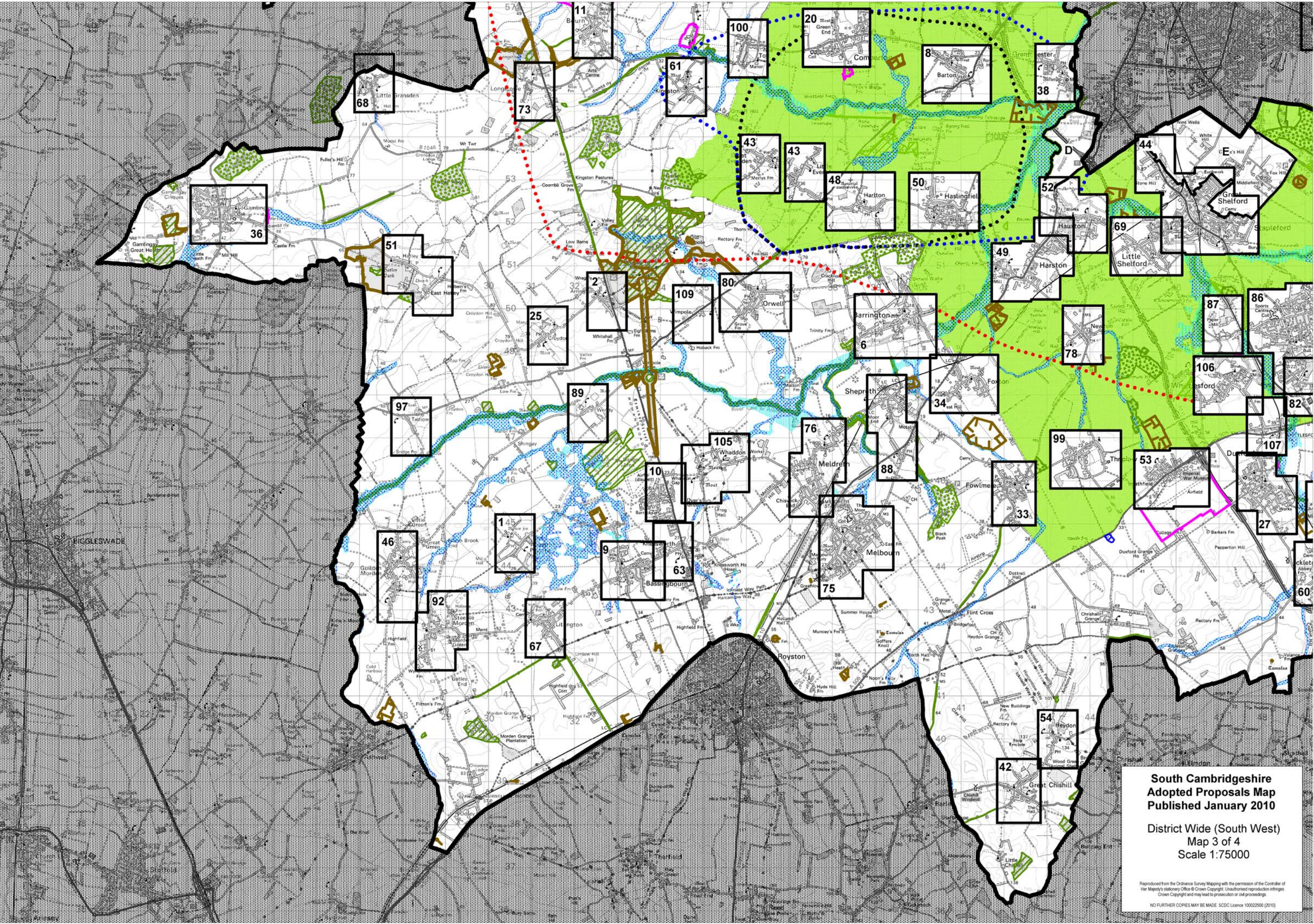


**South Cambridgeshire
Adopted Proposals Map
Published January 2010**

District Wide (North East)
Map 2 of 4
Scale 1:75000

Reproduced from the Ordnance Survey Mapping with the permission of the Controller of Her Majesty's Stationery Office © Crown Copyright. Unauthorised reproduction infringes Crown Copyright and may lead to prosecution or civil proceedings.
NO FURTHER COPIES MAY BE MADE. SDCS Licence 100022500 (2010)

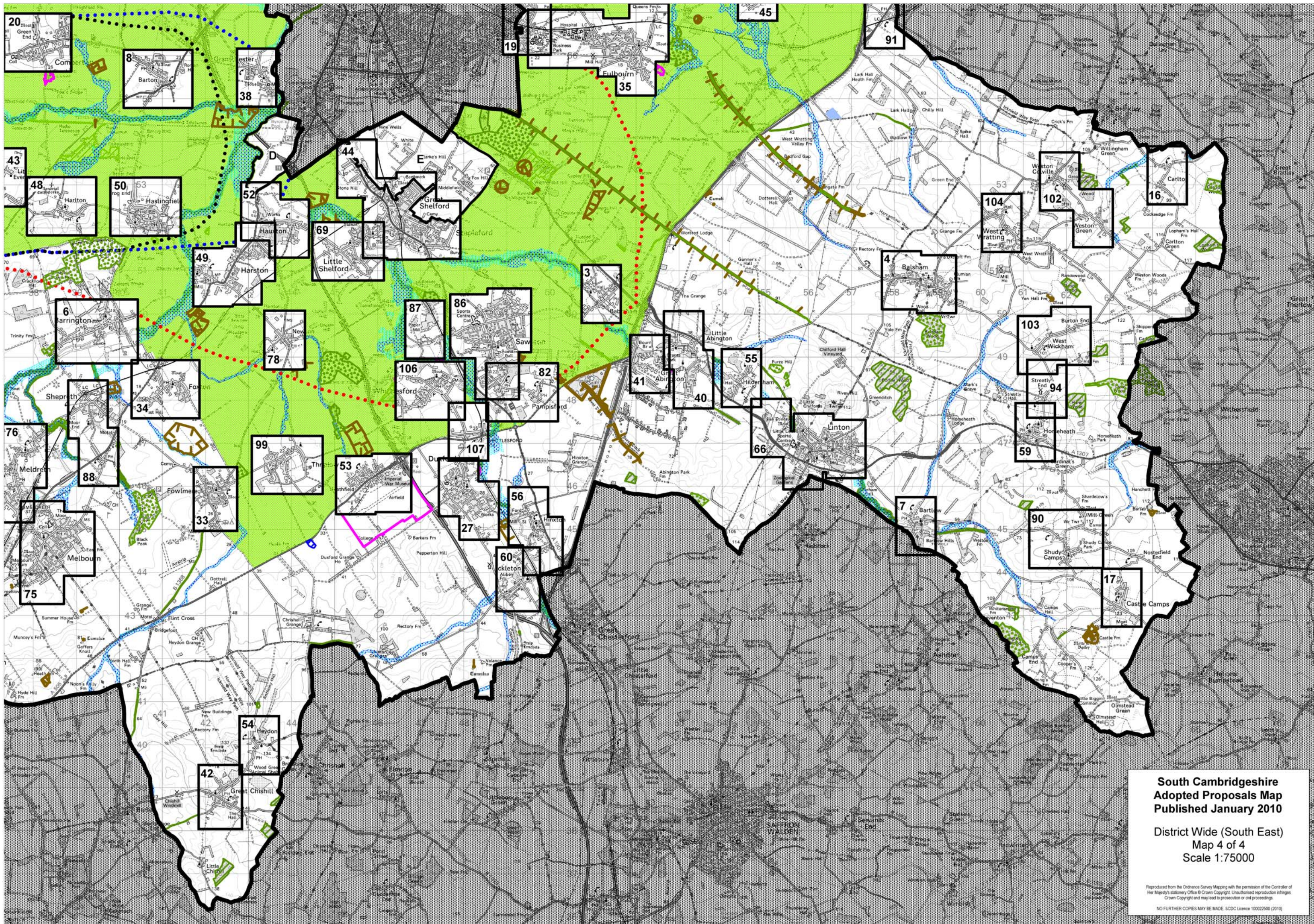




**South Cambridgeshire
Adopted Proposals Map
Published January 2010**

District Wide (South West)
Map 3 of 4
Scale 1:75000

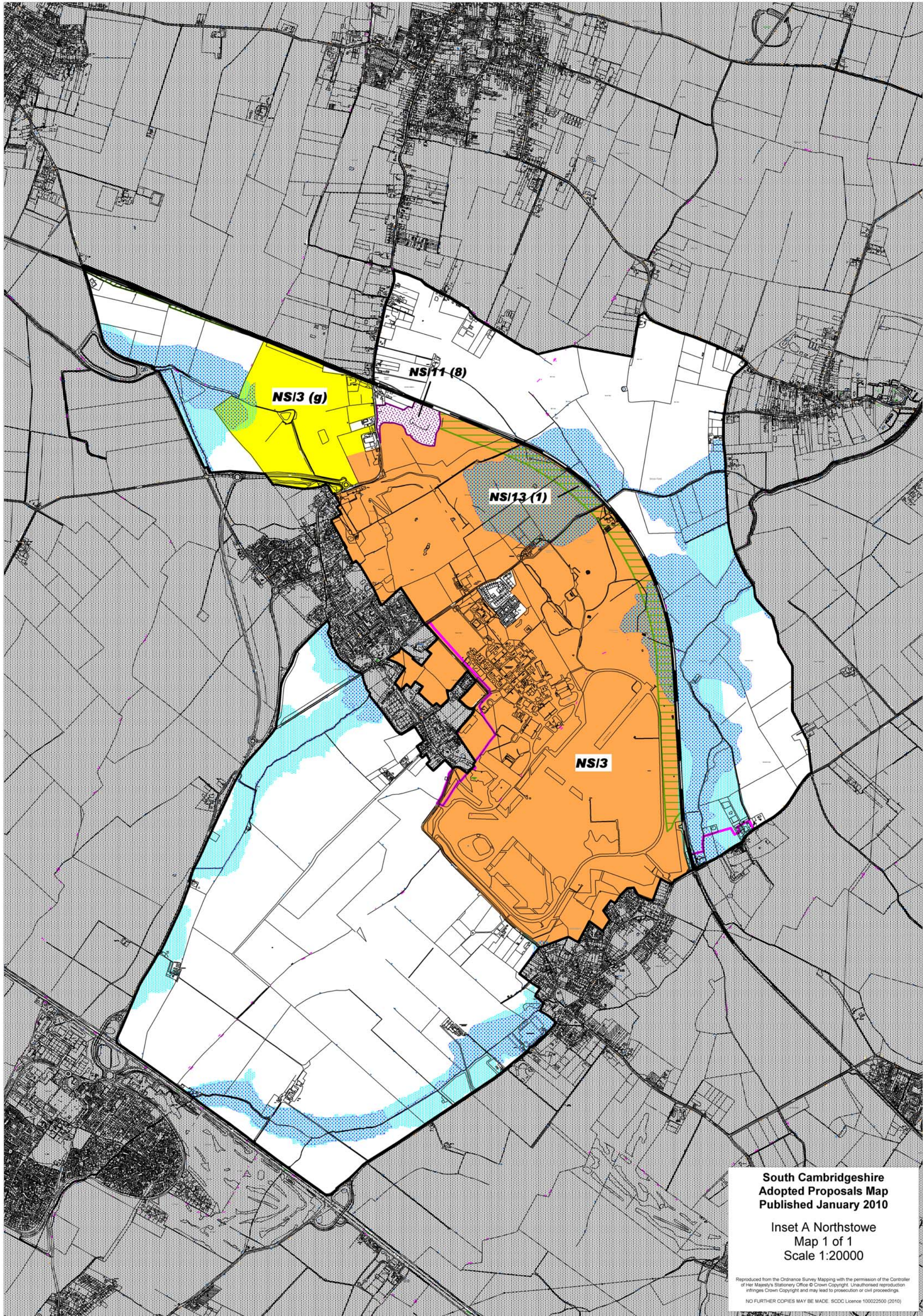
Reproduced from the Ordnance Survey Mapping with the permission of the Controller of Her Majesty's Stationery Office © Crown Copyright. Unauthorised reproduction infringes Crown Copyright and may lead to prosecution or civil proceedings.
NO FURTHER COPIES MAY BE MADE. SDCD Licence 100022500 (2010)



**South Cambridgeshire
Adopted Proposals Map
Published January 2010**

District Wide (South East)
Map 4 of 4
Scale 1:75000

Reproduced from the Ordnance Survey Mapping with the permission of the Controller of Her Majesty's Stationery Office © Crown Copyright. Unauthorised reproduction infringes Crown Copyright and may lead to prosecution or civil proceedings.
NO FURTHER COPIES MAY BE MADE. SDCD Licence 100022500 (2010)



**South Cambridgeshire
Adopted Proposals Map
Published January 2010**

**Inset A Northstowe
Map 1 of 1
Scale 1:20000**

Reproduced from the Ordnance Survey Mapping with the permission of the Controller of Her Majesty's Stationery Office © Crown Copyright. Unauthorised reproduction infringes Crown Copyright and may lead to prosecution or civil proceedings.
NO FURTHER COPIES MAY BE MADE. SCDC Licence 100022500 (2010)